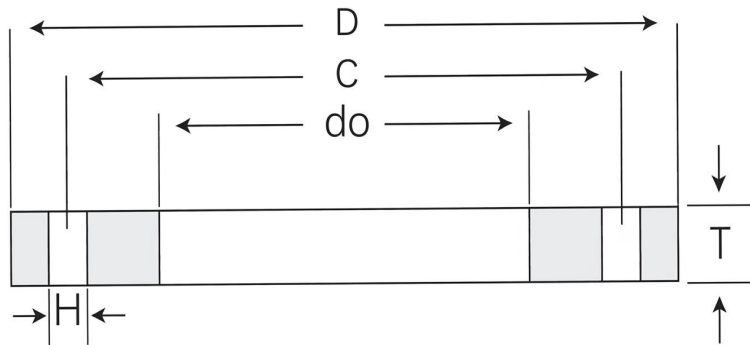


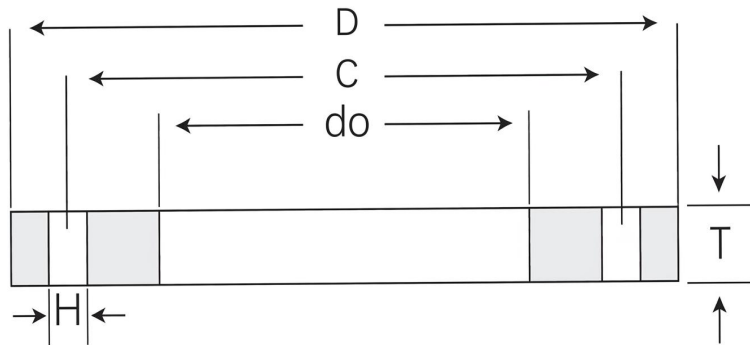
**BS10 TABLE D**  
BS10:1962



Nominal Pipe Size	Outside Diam	BORE	Thickness	Bolt circle diam	Diam of Bolt	Number of holes	Weight /kg	
							Slip on	Blind
T/D	D	do	T	C	H	N		
15MM	95.3	22.0	4.8	66.7	14.3	4	0.23	0.25
20MM	101.6	27.6	4.8	73.0	14.3	4	0.26	0.29
25MM	114.3	34.4	4.8	82.6	14.3	4	0.33	0.37
32MM	120.7	43.1	6.4	87.3	14.3	4	0.46	0.55
40MM	133.4	49.0	6.4	98.4	14.3	4	0.56	0.68
50MM	152.4	61.1	7.9	114.3	17.5	4	0.89	1.08
65MM	165.1	77.1	7.9	127.0	17.5	4	0.97	1.28
80MM	184.2	90.3	9.5	146.1	17.5	4	1.43	1.93
100MM	215.9	115.9	9.5	177.8	17.5	4	1.87	2.67
125MM	254.0	141.6	12.7	209.6	17.5	8	3.31	4.90
150MM	279.4	170.5	12.7	235.0	17.5	8	3.72	5.96
200MM	336.6	221.8	12.7	292.1	17.5	8	4.87	8.72
250MM	406.4	276.2	15.9	355.6	22.2	8	8.41	15.92
300MM	457.2	327.6	19.1	406.4	22.2	12	11.37	24.12
350MM	527.1	359.7	22.2	469.9	25.4	12	19.47	37.24
400MM	577.9	411.0	22.2	520.7	25.4	12	21.92	44.93
450MM	641.4	462.5	25.4	584.2	25.4	12	30.29	63.54
500MM	704.9	513.6	28.6	641.4	25.4	16	40.03	86.29
600MM	825.5	616.5	31.8	755.7	28.6	16	57.50	131.68

## BS10 TABLE E

BS10:1962



Nominal Pipe Size	Outside Diam	BORE	Thickness	Bolt circle diam	Diam of Bolt	Number of holes	Weight /kg	
							Slip on	Blind
T/D	D	do	T	C	H	N		
15MM	95.3	22	6.4	66.7	14.3	4	0.30	0.33
20MM	101.6	27.6	6.4	73	14.3	4	0.34	0.38
25MM	114.3	34.4	7.1	82.6	14.3	4	0.48	0.54
32MM	120.7	43.1	7.9	87.3	14.3	4	0.58	0.68
40MM	133.4	49	8.7	98.4	14.3	4	0.78	0.92
50MM	152.4	61.1	9.5	114.3	17.5	4	1.07	1.30
65MM	165.1	77.1	10.3	127	17.5	4	1.27	1.67
80MM	184.2	90.3	11.1	146.1	17.5	4	1.67	2.25
100MM	215.9	115.9	12.7	177.8	17.5	8	2.47	3.49
125MM	254	141.6	14.3	209.6	17.5	8	3.73	5.51
150MM	279.4	170.5	17.5	235	22.2	8	4.96	8.12
200MM	336.6	221.8	19.1	292.1	22.2	8	7.11	13.01
250MM	406.4	276.2	22.2	355.6	22.2	12	11.47	22.03
300MM	457.2	327.6	25.4	406.4	25.4	12	14.91	31.83
350MM	527.1	359.7	28.6	469.9	25.4	12	25.09	47.98
400MM	577.9	411	31.8	520.7	25.4	12	31.40	64.36
450MM	641.4	462.5	34.9	584.2	25.4	16	41.06	86.88
500MM	704.9	513.6	38.1	641.4	25.4	16	53.32	114.95
600MM	825.5	616.5	47.6	755.7	31.8	16	85.16	196.30