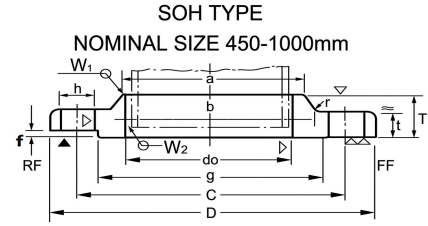
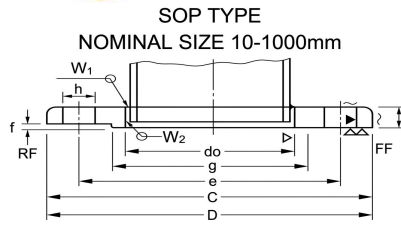


5Kg/Cm²

JIS B2220-1984(KSB 1503-1985)

5Kg/Cm² SLIP-ON WELDING STEEL PIPE FLANGES



Unit: mm

Nominal Bore of Flange	Outside Diam.of ApplCable Pipe	Inside Diam.of Flange	Outside Diam.of Flange	Sectional Dimensions of Flange							Dia.of Bolt			Nominal Bolt Size	Weight(kg)		
				t	T	Diam.of Hub		Rad - ius	Raise d face	Diam.of Raised Face	Diam.o f Bolt Circle	Numb er of Bolt Holes	Hole Dlam		SOP	BL	SOH
						a	b										
(10)	17.3	17.8	75	9	-	-	-	-	1	39	55	4	12	M10	0.3	0.3	-
15	21.7	22.2	80	9	-	-	-	-	1	44	60	4	12	M10	0.3	0.4	-
(20)	27.2	27.7	85	10	-	-	-	-	1	49	65	4	12	M10	0.4	0.5	-
25	34.0	34.5	95	10	-	-	-	-	1	59	75	4	12	M10	0.5	0.6	-
(32)	42.7	43.2	115	12	-	-	-	-	2	70	90	4	15	M12	0.8	0.9	-
40	48.6	49.1	120	12	-	-	-	-	2	75	95	4	15	M12	0.8	1.0	-
50	60.5	61.1	130	14	-	-	-	-	2	85	105	4	15	M12	1.1	1.4	-
65	76.3	77.1	155	14	-	-	-	-	2	110	130	4	15	M12	1.5	2.0	-
80	89.1	90.0	180	14	-	-	-	-	2	121	145	4	19	M16	2.0	2.7	-
(90)	101.6	102.6	190	14	-	-	-	-	2	131	155	4	19	M16	2.1	3.0	-
100	114.3	115.4	200	16	-	-	-	-	2	141	165	8	19	M16	2.4	3.7	-
125	139.8	141.2	235	16	-	-	-	-	2	176	200	8	19	M16	3.2	5.2	-
150	165.2	166.6	265	18	-	-	-	-	2	206	230	8	19	M16	4.4	7.5	-
(175)	190.7	192.1	300	18	-	-	-	-	2	232	260	8	23	M20	5.5	9.5	-
200	216.3	218.0	320	20	-	-	-	-	2	252	280	8	23	M20	6.3	12.2	-
(225)	241.8	243.7	345	20	-	-	-	-	2	277	305	12	23	M20	6.6	14.0	-
250	267.4	269.5	385	22	-	-	-	-	2	317	345	12	23	M20	9.5	19.3	-
300	318.5	321.0	430	22	-	-	-	-	3	360	390	12	23	M20	10.3	24.3	-
350	355.6	358.1	480	24	-	-	-	-	3	403	435	12	25	M22	14.0	33.2	-
400	406.4	409.0	540	24	-	-	-	-	3	463	495	16	25	M22	16.9	41.9	-
450	457.2	460.0	605	24	40	495	500	5	3	523	555	16	25	M22	21.6	53.0	24.8
500	508.0	511.0	655	24	40	546	552	5	3	573	605	20	25	M22	23.1	61.9	26.9
550	558.8	562.0	720	26	42	597	603	5	3	630	665	20	27	M24	30.3	81.2	34.1
600	609.6	613.0	770	26	44	648	654	5	3	680	715	20	27	M24	32.7	93.2	37.5
650	660.4	684.0	825	26	48	702	708	5	3	735	770	24	27	M24	35.9	106.9	42.8
700	711.2	715.0	875	26	48	751	758	5	3	785	820	24	27	M24	38.2	120.6	45.4
750	762.0	766.0	945	28	52	802	810	5	3	840	880	24	33	M30	48.7	150.5	57.4
800	812.8	817.0	995	28	52	854	862	5	3	890	930	24	33	M30	51.2	167.4	60.8
(850)	863.6	868.0	1045	28	54	904	912	5	3	940	980	24	33	M30	54.4	185.1	63.5
900	914.4	919.0	1095	30	56	956	964	5	3	990	1030	24	33	M30	61.1	218.1	75.3
1000	1016.0	1021.0	1195	32	60	1058	1066	5	3	1090	1130	28	33	M30	70.5	277.3	88.5
*(1100)	1117.6	1123.0	1305	32	-	-	-	-	3	1200	1240	28	33	M30	81.7	331.9	-
*1200	1219.2	1224.0	1420	34	-	-	-	-	3	1305	1350	32	33	M30	102.0	417.8	-
*1350	1371.6	-	1575	34	-	-	-	-	3	1460	1505	32	33	M30	115.9	515.6	-
*1500	1524.0	-	1730	36	-	-	-	-	3	1615	1660	36	33	M30	157.4	659.2	-

1.Flanges of parenthesized nominal diameter had letter not be used.

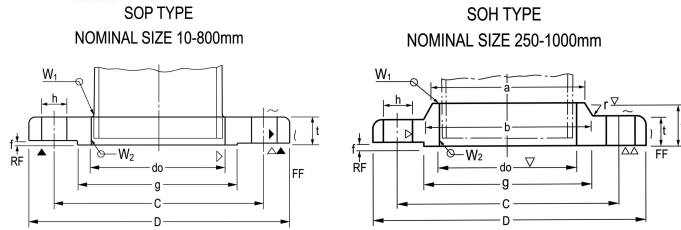
2.The facing of flanges shall conform to KS B1509(JIS B2202)1984.

3.Nominal diameter over 1000 is manufacturer,s standard(*)

10Kg/Cm²

JIS B2220-1984(KSB 1503-1985)

5Kg/Cm² SLIP-ON WELDING STEEL PIPE FLANGES



Unit: mm

Nominal Bore of Flange	Outside Diam.of Appl.Cable Pipe	Inside Diam.of Flange do	Outside Diam.of Flange D	Sectional Dimensions of Flange							Dia.of Bolt			Weight(kg)			
				t	T	Diam.of Hub		Rad - ius r	Raise d face f	Diam.of Raised Face g	Diam.o f Bolt Circle C	Number of Bolt Holes	Hole Diam h	Nomin al Bolt Size	SOP	BL	SOH
						a	b										
10	17.3	17.8	90	12	-	-	-	-	1	46	65	4	15	M12	0.52	0.54	-
15	21.7	22.2	95	12	-	-	-	-	1	51	70	4	15	M12	0.57	0.61	-
20	27.2	27.7	100	14	-	-	-	-	1	56	75	4	15	M12	0.73	0.79	-
25	34	34.5	125	14	-	-	-	-	1	67	90	4	19	M16	1.13	1.24	-
32	42.7	43.2	135	16	-	-	-	-	2	76	100	4	19	M16	1.48	1.66	-
40	48.6	49.1	140	16	-	-	-	-	2	81	105	4	19	M16	1.56	1.81	-
50	60.5	61.1	155	16	-	-	-	-	2	96	120	4	19	M16	1.88	2.23	-
65	76.3	77.1	175	18	-	-	-	-	2	116	140	4	19	M16	2.6	3.3	-
80	89.1	90	185	18	-	-	-	-	2	126	150	8	19	M16	2.61	3.5	-
-90	101.6	102.6	195	18	-	-	-	-	2	136	160	8	19	M16	2.76	4	-
100	114.3	115.4	210	18	-	-	-	-	2	151	175	8	19	M16	3.14	4.6	-
125	139.8	141.2	250	20	-	-	-	-	2	182	210	8	23	M20	4.77	7.3	-
150	165.2	166.6	280	22	-	-	-	-	2	212	240	8	23	M20	6.34	10.1	-
-175	190.7	192.1	305	22	-	-	-	-	2	237	265	12	23	M20	6.82	11.8	-
200	216.3	218	330	22	-	-	-	-	2	262	290	12	23	M20	7.53	14	-
-225	241.8	243.7	350	22	-	-	-	-	2	282	310	12	23	M20	7.74	15.8	-
250	267.4	269.5	400	24	36	288	292	6	2	324	355	12	25	M22	11.8	22.7	12.7
300	318.5	321	445	24	38	340	346	6	3	368	400	16	25	M22	12.7	27.8	13.8
350	355.6	358.1	490	26	42	380	386	6	3	413	445	16	25	M22	16.4	37.1	18.2
400	406.4	409	560	28	44	436	442	6	3	475	510	16	27	M24	23	52.5	25.2
450	457.2	460	620	30	48	496	502	6	3	530	565	20	27	M24	29.5	68.8	33
500	508	511	675	30	48	548	554	6	3	585	620	20	27	M24	33.5	82.1	37.6
-550	558.8	562	745	32	52	604	610	6	3	640	680	20	33	M30	43.1	105.8	49.7
600	609.6	613	795	32	52	656	662	6	3	690	730	24	33	M30	45.7	120.2	52.6
-650	660.4	664	845	34	56	706	712	6	3	740	780	24	33	M30	52.1	145	60.6
700	711.2	715	905	34	58	762	770	6	3	800	840	24	33	M30	59.5	167.2	70.6
-750	762	766	970	36	62	816	824	6	3	855	900	24	33	M30	73.2	204.2	85.8
800	812.8	817	1020	36	64	868	876	6	3	905	950	28	33	M30	76.4	225.4	91.2
-850	863.6	868	1070	36	66	920	928	6	3	955	1000	28	33	M30	80.7	248.8	98.6
900	914.4	919	1120	38	70	971	979	6	3	1005	1050	28	33	M30	89.4	288.4	109
1000	1016	1021	1235	40	74	1073	1081	6	3	1110	1160	28	39	M36	109.2	367.7	133
*(1100)	1117.6	1123	1345	42	76	-	-	-	3	1220	1270	28	39	M36	131.6	460	-
*1200	1219.2	1224	1465	44	78	-	-	-	3	1325	1380	32	39	M36	163.5	572.2	-
*1350	1371.6	-	1630	48	82	-	-	-	3	1480	1540	36	45	M42	204.7	769	-
*1500	1524	-	1795	50	90	-	-	-	3	1635	1700	40	45	M42	250.2	974.9	-

1. Flanges of parenthesized nominal diameter had letter not be used.

2. The facing of flanges shall conform to KS B1509(JIS B2202)1984.

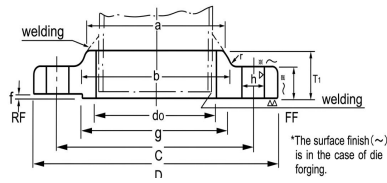
3. Nominal diameter over 1000 is manufacturer,s standard(*)

16Kg/Cm²

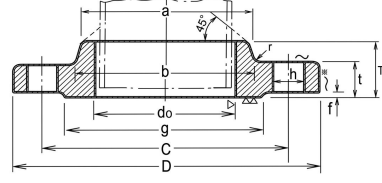
JIS B2220-1984(KSB 1503-1985)

5Kg/Cm² SLIP-ON WELDING STEEL PIPE FLANGES

NOMINAL SIZE 10-600mm



NOMINAL SIZE 650-1200mm



Unit: mm

Nominal Bore of Flange	Outside Diam. of Appl. Cable Pipe	Inside Diam. of Flange	Outside Diam. of Flange	Sectional Dimensions of Flange							Dia. of Bolt			Weight(kg)			
				t	T	Diam. of Hub		Rad - ius	Raise d face	Diam. of Raised Face	Diam. of Bolt Circle	Number of Bolt Holes	Hole Diam	Nominal Bolt Size	SOP	BL	SOH
						a	b										
10	17.3	17.8	90	12	16	26	28	4	1	46	65	4	15	M12	0.5	0.5	0.5
15	21.7	22.2	95	12	16	30	32	4	1	51	70	4	15	M12	0.6	0.6	0.6
20	27.2	27.7	100	14	20	38	42	4	1	56	75	4	15	M12	0.7	0.8	0.8
25	34.0	34.5	125	14	20	46	50	4	1	67	90	4	19	M16	1.1	1.2	1.2
32	42.7	43.2	135	16	22	56	60	5	2	76	100	4	19	M16	1.5	1.7	1.5
40	48.6	49.1	140	16	24	62	66	5	2	81	105	4	19	M16	1.6	1.8	1.6
50	60.5	61.1	155	16	24	76	80	5	2	96	120	8	19	M16	1.8	2.3	1.8
65	76.3	77.1	175	18	26	94	98	5	2	116	140	8	19	M16	2.5	3.1	2.6
80	89.1	90.0	200	20	28	108	112	6	2	132	160	8	23	M20	3.5	4.5	3.7
(90)	101.6	102.6	210	20	30	120	124	6	2	145	170	8	23	M20	3.7	5.0	4.0
100	114.3	115.4	225	22	34	134	138	6	2	160	185	8	23	M20	4.5	6.3	4.9
125	139.8	141.2	270	22	34	164	170	6	2	195	225	8	25	M22	6.5	9.2	7.0
150	165.2	166.6	305	24	38	196	202	6	2	230	260	12	25	M22	8.7	12.8	9.6
200	216.3	218.0	350	26	40	244	252	6	2	275	305	12	25	M22	10.9	18.6	12.1
250	267.4	269.5	430	28	44	304	312	6	2	345	380	12	27	M24	18.0	30.6	20.0
300	318.5	321.0	480	30	48	354	364	8	3	395	430	16	27	M24	21.5	40.7	24.4
350	355.6	358.1	540	34	52	398	406	8	3	440	480	16	33	M30 x 3	30.8	57.8	35.0
400	406.4	409.0	605	38	60	446	456	10	3	495	540	16	33	M30 x 3	42.8	82.2	46.2
450	457.2	460.0	675	40	64	504	514	10	3	560	605	20	33	M30 x 3	55.1	107.6	61.9
500	508.0	511.0	730	42	68	558	568	10	3	615	660	20	33	M30 x 3	65.1	133.1	73.3
(550)	558.8	562.0	795	44	70	612	622	10	3	670	720	20	39	M36 x 3	77.9	164.1	88.1
600	609.6	613.0	845	46	74	666	676	10	3	720	770	24	39	M36 x 3	86.0	193.2	98.8
(650)	660.4	664.0	895	48	77	704	726	10	5	770	820	24	39	M36 x 3	96.3	227.5	101.0
700	711.2	715.0	960	50	80	754	776	10	5	820	875	24	42	M39 x 3	114.1	272.6	120.0
(750)	762.0	766.0	1020	52	63	806	832	10	5	880	935	24	42	M39 x 3	132.7	321.9	141.0
800	812.8	817.0	1085	54	86	865	885	10	5	930	990	24	48	M45 x 3	152.1	375.6	161.0
(850)	863.6	868.0	1135	56	89	916	936	10	5	980	1040	24	48	M45 x 3	166.5	428.1	177.0
900	914.4	919.0	1185	58	93	968	986	10	5	1030	1090	28	48	M45 x 3	178.1	481.8	191.0
1000	1016.0	1021.0	1320	62	99	1070	1098	12	5	1140	1210	28	56	M52 x 3	235.3	636.0	230.0
1100	1117.6	1123.0	1420	66	105	1180	1200	12	5	1240	1310	32	56	M52 x 3	267.9	784.0	289.0
1200	1219.2	1224.0	1530	70	112	1282	1302	12	5	1350	1420	32	56	M52 x 3	321.1	972.4	348.0
1300	1320.8	1326.0	1645	74						1450	1530	32	62		378.6	1185.2	
1350	1371.6	1377.0	1700	76						1510	1590	32	62		410.0	1303.8	
1400	1422.4	1428.0	1755	78						1560	1640	36	62		436.0	1422.5	
1500	1524.0	1529.0	1865	80						1670	1750	36	62		496.4	1656.6	

1. Flanges of parenthesized nominal diameter had letter not be used.

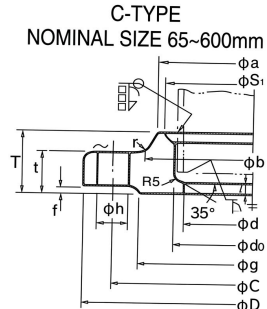
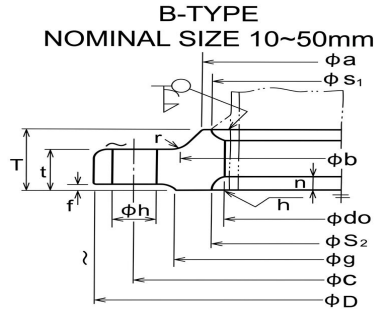
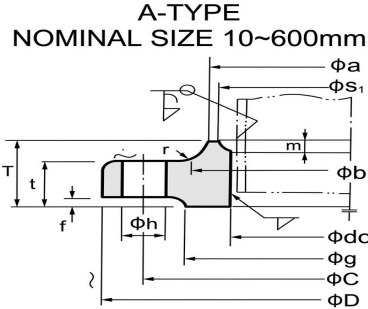
2. For dimensional tolerance, refer to JIS B2203.

3. In principle material shall be SS400 specified in JIS G3101, SF39A (or SF440A) specified in JIS G3201, or S20C (or S25C) specified in JIS G4051, and shall be fit for welding.

20Kg/Cm²

JIS B2220-1984(KSB 1503-1985)

5Kg/Cm² SLIP-ON WELDING STEEL PIPE FLANGES



*The surface finish(～) is in the case of die forging.

Unit: mm

Nominal Bore of Flange	Outside Diam. of Appl. Cable Pipe	Inside Diam. of Flange	Outside Diam. of Flange	Sectional Dimensions of Flange								Dia. of Bolt			Nominal Bolt Size	S1	m	S2	n	L	Weight(kg)		
				t	T	Diam. of Hub		Rad. -ius	Raised face	Diam. of Raised Face	d	Diam. of Bolt Circle	Number of Bolt Holes	Hole Diam							SOP	BL	SOH
						a	b																
10	17.3	17.8	90	14	20	30	32	4	1	46	-	65	4	15	M12	27	4	27	4	-	0.6	0.6	0.59
15	21.7	22.2	95	14	20	34	36	4	1	51	-	70	4	15	M12	31	4	31	4	-	0.7	0.7	0.65
20	27.2	27.7	100	16	22	40	42	4	1	56	-	75	4	15	M12	37	4	37	4	-	0.8	0.9	0.81
25	34	34.5	125	16	24	48	50	4	1	67	-	90	4	19	M16	44	4	44	4.5	-	1.3	1.5	1.29
32	42.7	43.2	135	18	26	56	60	5	2	76	-	100	4	19	M16	52	4	53	5	-	1.6	1.8	1.6
40	48.6	49.1	140	18	26	62	66	5	2	81	-	105	4	19	M16	58	4	59	5.5	-	1.7	2	1.69
50	60.5	61.1	155	18	26	76	80	5	2	96	-	120	8	19	M16	70	4	72	5.5	-	1.9	2.4	1.89
65	76.3	77.1	175	20	30	100	104	5	2	116	65.9	140	8	19	M16	94	6	85	6	6	2.6	3.4	2.6
80	89.1	90	200	22	34	113	117	6	2	132	78.1	160	8	23	M20	107	6	-	-	6	3.8	4.9	3.93
(90)	101.6	102.6	210	24	36	126	130	6	2	145	90.2	170	8	23	M20	120	6	-	-	6	4.4	6	4.56
100	114.3	115.4	225	24	36	138	142	6	2	160	102.3	185	8	23	M20	132	6	-	-	6	4.9	6.9	5.13
125	139.8	141.2	270	26	40	166	172	6	2	195	126.8	225	8	25	M22	160	7	-	-	6	7.8	11	8.3
150	165.2	166.6	305	28	42	196	202	6	2	230	151	260	12	25	M22	186	8	-	-	6	10.1	14.9	10.6
200	216.3	218	350	30	46	244	252	6	2	275	199.9	305	12	25	M22	237	9	-	-	6	12.6	21.4	13.3
250	267.4	269.5	430	34	52	304	312	6	2	345	248.8	380	12	27	M24	290	10	-	-	6	21.9	37.2	23.4
300	318.5	321	480	36	56	354	364	8	3	395	297.9	430	16	27	M24	345	11	-	-	6	25.8	48.8	27.7
350	355.6	358.1	540	40	62	398	408	8	3	440	333.4	480	16	33	M30 × 3	384	12	-	-	6	36.2	68	39.2
400	406.4	409	605	46	70	446	456	10	3	495	381	540	16	33	M30 × 3	437	13	-	-	7	51.7	99.4	54.2
450	457.2	460	675	48	78	504	514	10	3	560	431.8	605	20	33	M30 × 3	490	15	-	-	7	66.1	129.1	71.7
500	508	511	730	50	84	558	568	10	3	615	482.6	660	20	33	M30 × 3	544	16	-	-	7	77.4	158.4	86.2
(550)	558.8	562	795	52	90	612	622	10	3	670	533.4	720	20	39	M36 × 3	595	16	-	-	7	92.2	194	105
600	609.6	613	845	54	96	666	676	10	3	720	584.2	770	24	39	M36 × 3	646	18	-	-	7	101.1	226.9	119
(650)	660.4	664	945	60	-	-	-	-	5	790	-	850	24	48	M45 × 3						147.6	311.6	
700	711.2	715	995	64	-	-	-	-	5	840	-	900	24	48	M45 × 3						168.0	370.9	
(750)	762	766	1080	68	-	-	-	-	5	900	-	970	24	56	M52 × 3						212.7	460.1	
800	812.8	817	1140	72	-	-	-	-	5	960	-	1030	24	56	M52 × 3						248.5	546.5	
(850)	863.6	868	1200	74	-	-	-	-	5	1020	-	1090	24	56	M52 × 3						280.5	626.2	
900	914.4	919	1250	76	-	-	-	-	5	1070	-	1140	28	56	M52 × 3						296.9	694.9	

1. Flanges of parenthesized nominal diameters had better not be used.

2. The Flange gasket surface is based on large raised facing specified in JIS B2202.

3. Size d is an example of pipe thickness for schedule 40 of JIS G3454, and JIS G3456. But customers can order for other size as occasion demand.

4. For dimensional tolerance, refer to JIS B2203.

5. In principle, material shall be aS400 specified in JIS G3101, SF390A(or SF440A) specified in JIS G3201, or S20C(or S25C) specified in JIS G4051. Material shall be fit for welding.

*The surface finish is the case of forging(V: in other cases).

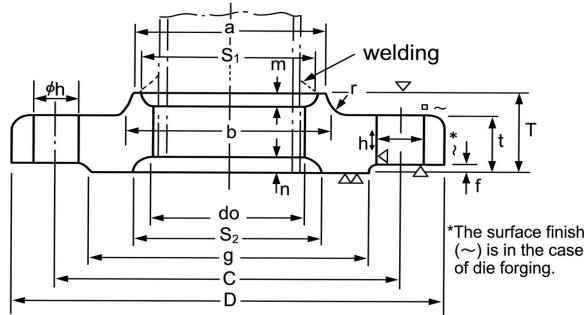
30Kg/Cm²

JIS B2220-1984(KSB 1503-1985)

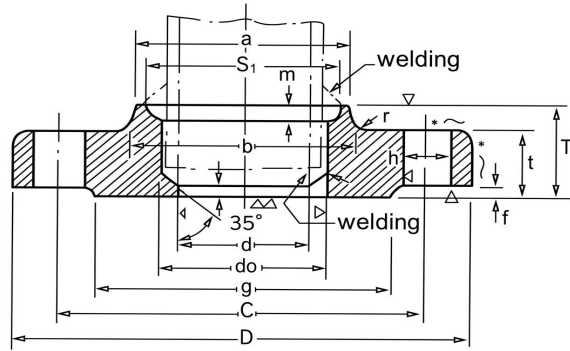
30Kg/Cm² SLIP-ON WELDING STEEL PIPE FLANGES

A-TYPE NOMINAL SIZE 10-400mm

B-TYPE NOMINAL SIZE 10-50mm



C-TYPE NOMINAL SIZE 65-400mm



Unit: mm

Nominal Bore of Flange	Outside Diam.of ApplCable Pipe	Inside Diam.of Flange	Outside Diam.of Flange	Sectional Dimensions of Flange								Dia.of Bolt			Nominal Bolt Size	S1	m	S2	n	L	Weight(kg)	
				t	T	Diam.of Hub		Rad-ius	Raised face	Diam.of Raised Face	d	Diam.of Bolt Circle	Number of Bolt Holes	Hole Diam							SOH	BL
						a	b															
10	17.3	17.8	110	16	24	30	34	4	1	52	-	75	4	19	M16	27	4	27	4	-	0.99	1.00
15	21.7	22.2	115	18	26	36	40	5	1	55	-	80	4	19	M16	31	4	40	5	-	1.23	1.25
20	27.2	27.7	120	18	28	42	46	5	1	60	-	85	4	19	M16	37	5	44	5	-	1.34	1.38
25	34	34.5	130	20	30	50	54	5	1	70	-	95	4	19	M16	44	6	52	5	-	1.76	1.84
32	42.7	43.2	140	22	32	60	64	6	2	80	-	105	4	19	M16	52	6	60	5	-	2.15	2.32
40	48.6	49.1	160	22	34	66	70	6	2	90	-	120	4	23	M20	58	6	66	5	-	2.82	3.00
50	60.5	61.1	165	22	36	82	86	6	2	105	-	130	8	19	M16	70	6.5	78	5	-	2.89	3.14
65	76.3	77.1	200	26	40	102	106	8	2	130	65.9	160	8	23	M20	96	9.5	94	5	6	4.7	5.50
80	89.1	90	210	28	44	115	121	8	2	140	78.1	170	8	23	M20	109	9.5	-	-	6	5.36	6.63
(90)	101.6	102.6	230	30	46	128	134	8	2	150	90.2	185	8	25	M22	122	9.5	-	-	6	6.85	8.55
100	114.3	115.4	240	32	48	141	147	8	2	160	102.3	195	8	25	M22	135	9.5	-	-	6	7.89	10.00
125	139.8	141.2	275	36	54	166	172	8	2	195	126.6	230	8	25	M22	160	9.5	-	-	6	11.4	15.30
150	165.2	166.6	325	38	58	196	204	8	2	235	151.0	275	12	27	M24	186	9.5	-	-	6	16.7	22.20
200	216.3	218	370	42	64	248	258	8	2	280	199.9	320	12	27	M24	237	9.5	-	-	6	20.6	32.60
250	267.4	269.5	450	48	72	306	314	10	2	345	248.6	390	12	33	M30 x 3	290	10	-	-	6	36.1	55.20
300	318.5	321	515	52	78	360	370	10	3	405	297.9	450	16	33	M30 x 3	345	12	-	-	6	49.9	77.90
350	355.6	358.1	560	54	84	402	412	12	3	450	333.4	495	16	33	M30 x 3	383	13	-	-	6	61.2	96.90
400	406.4	409	630	60	92	456	468	15	3	510	381.0	560	16	39	M36 x 3	435	14	-	-	7	85.2	136.00

1.As far as possible,nominal diameter in parenthesis should be avoid from use .

2.The dimensional tolerancer shall confirm to JIS B2203.

3.The flange gasket surface is based on large raised facing specified in JIS b2202.But,if necessary,facings other than the Large raised facing specified in JIS B2201 can be designated by customers.

4. Sized is an example of pipe thickness for schedule 40 of JIS G3454 and JIS B3456.When other size is necessary,customers Can order it at will.

5.Material

Carbon Steel:S25C specified in JIS G4051,or Sf440A specified in JIS G3201.

Molybdeum steel:1/2 Mo steel spcified in tables 1 and 2 of JIS B2215.

Chromium-Molybdenum steel:1/4Cr1/2Mo Steel specified in tables 1 and 2 of JIS B2215.

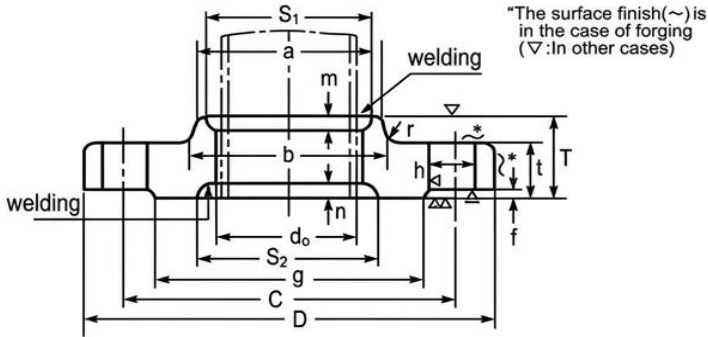
*The surface finish is in the case of forging(A:in other cases)

40Kg/Cm²

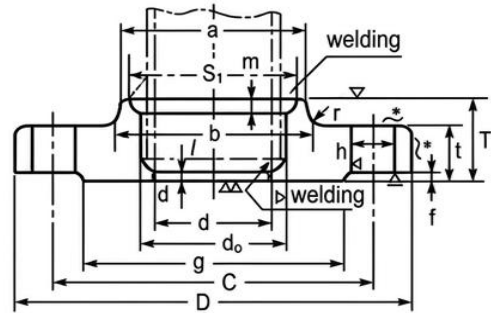
JIS B2220-1984(KSB 1503-1985)

40Kg/Cm² SLIP-ON STEEL PIPE FLANGES

NOMINAL SIZE 10-65mm



NOMINAL SIZE 65-400mm



Unit: mm

Nominal Bore of Flange	Outside Diam.of ApplCable Pipe	Inside Diam.of Flange	Outside Diam.of Flange	Sectional Dimensions of Flange								Dia.of Bolt			Nominal Bolt Size	S1	m	S2	n	L	Weight(kg)
				t	T	Diam.of Hub		Rad-ius	Raised face	Diam.of Raised Face	d	Diam.of Bolt Circle	Number of Bolt Holes	Hole Diam							
						a	b														
10	17.3	17.8	110	18	26	34	38	5	1	58	-	75	4	19	M16	28	6	28.0	5		1.11
15	21.7	22.2	115	20	30	39	43	5	1	55	-	80	4	19	M16	32.5	6	32.5	5		1.39
20	27.2	27.7	120	20	30	45	49	5	1	60	-	85	4	19	M16	38	6	38.0	5		1.51
25	34	34.5	130	22	32	55	59	5	1	70	-	95	4	19	M16	47.8	6	47.8	5		1.97
32	42.7	43.2	140	24	35	64	68	6	2	80	-	105	4	19	M16	56.5	6	56.5	5		2.5
40	48.6	49.1	160	24	35	70	74	6	2	90	-	120	4	23	M20	62.5	6	62.5	5		3.26
50	60.5	61.1	165	26	38	86	90	6	2	105	-	130	8	19	M16	74.5	6	74.5	5.5		3.47
65	76.3	77.1	200	30	44	106	110	8	2	130	62.3	160	8	23	M20	91.5	7	91.5	7		5.97
80	89.1	90.0	210	32	46	118	124	8	2	140	73.9	170	8	23	M20	105.5	7.5	105.5	7		6.76
100	114.3	115.4	250	36	40	145	151	8	2	165	97.1	205	8	25	M22	133	8.5	133.0	7		10.78
125	139.8	141.2	300									250	8	27	M24	160.5	9.5	160.5	7		16.97
150	165.2	166.6	355	44	64	200	208	8	2	240	143.2	295	12	33	M30	188	11	188.0	7		22.6
200	216.3	218.0	405	50	72	255	263	8	2	290	190.9	345	12	33	M30	243	13	243.0	7		34.9
250	267.4	269.5	475	56	80	310	318	10	2	355	237.2	410	12	33	M30	298	15	298.0	7		41.1

1.As far as possible,nominal diameter in parenthesis should be avoid from use .

2.The dimensional tolerancer shall confim to JIS B2203.

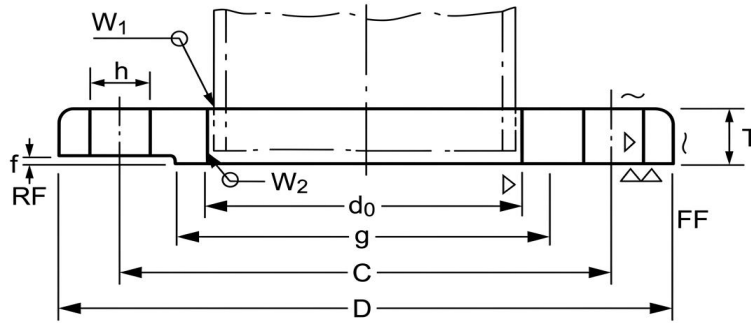
3.The flange gasket surface is based on large raised facing specified in JIS b2202.But,if necessary,facings other than the Large raised facing specified in JIS B2201 can be designated by customers.

4. Sized is an example of pipe thickness for schedule 40 of JIS G3454 and JIS B3456.When other size is necessary,customers Can order it at will.

5.Refer to JIS B2216.

1K

KS V 7815 JIS F 7805
SLIP-ON FLANGES



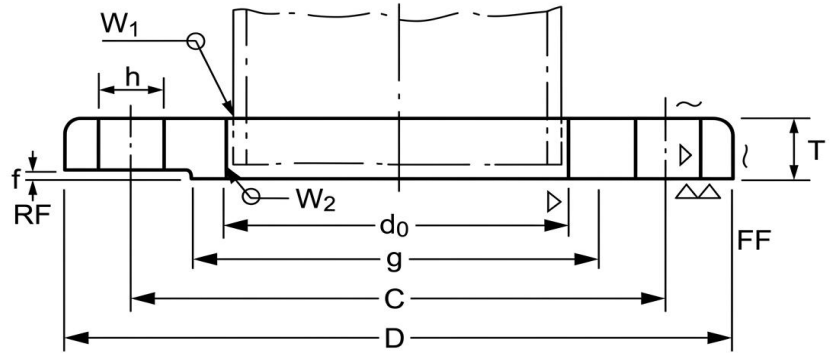
Unit: mm

N/D	PIPE	FLANGE			BOLT HOLE			BOLT(M)	WT(KG)
	O/D(d)	D	I/D(do)	T	C	N	H		
25	34.0	95.0	34.5	10	75	4	12	M10	0.45
(32)	42.7	115.0	43.2	12	90	4	15	M12	0.73
40	48.6	120.0	49.1	12	95	4	15	M12	0.83
50	60.5	130.0	61.1	14	105	4	15	M12	1.06
65	76.3	155.0	77.1	14	130	4	15	M12	1.48
80	89.1	180.0	90.0	14	145	4	19	M16	1.97
100	114.3	200.0	115.4	16	165	8	19	M16	2.35
125	139.8	235.0	141.2	16	200	8	19	M16	3.20
150	165.2	265.0	166.6	16	230	8	19	M16	3.90
200	216.3	320.0	218.0	16	280	8	23	M20	5.00
250	267.4	385.0	269.5	16	345	12	23	M20	6.83
300	318.5	430.0	321.0	16	390	12	23	M20	7.45
350	355.6	480.0	358.1	16	435	12	25	M22	9.45
400	406.4	540.0	409.0	16	495	16	225	M22	11.43
450	457.2	605.0	460.0	16	555	16	25	M22	14.40
500	508.0	655.0	511.0	16	605	16	25	M22	15.73
550	555.8	660.0	562.0	16	620	16	23	M20	12.00
600	609.6	710.0	613.0	16	670	16	23	M20	12.12
650	660.4	760.0	664.0	16	720	16	23	M20	12.15
700	711.2	815.0	715.0	16	775	16	23	M20	14.26
750	762.0	865.0	766.0	16	825	20	23	M20	14.88
800	812.8	915.0	817.0	16	875	20	23	M20	15.70
(850)	863.6	965.0	868.0	16	925	20	23	M20	16.50
900	914.4	1025.0	919.0	16	980	20	25	M22	21.48
950	962.0	1075.0	967.0	18	1030	20	25	M22	21.97
1000	1016.0	1125.0	1021.0	18	1080	20	25	M22	23.38
1050	1062.0	1175.0	1067.0	18	1130	24	25	M22	25.21
1100	1117.6	1225.0	1122.0	18	1180	24	25	M22	25.16
1150	1162.0	1275.0	1167.0	18	1230	24	25	M22	26.64
1200	1219.0	1325.0	1224.0	18	1280	24	25	M22	27.60
1250	1262.0	1375.0	1267.0	18	1330	28	25	M22	29.72
1300	1312.0	1425.0	1317.0	18	1380	28	25	M22	30.92
1350	1371.6	1475.0	1376.0	18	1430	28	25	M22	32.38
1400	1412.0	1525.0	1417.0	20	1480	28	25	M22	37.02
1450	1462.0	1595.0	1467.0	20	1540	28	27	M24	45.81
1500	1524.0	1645.0	1529.0	20	1590	28	27	M24	46.88
1600	1612.0	1745.0	1617.0	20	1690	28	27	M24	50.54
1700	1712.0	1845.0	1717.0	20	1790	28	27	M24	53.70
1800	1812.0	1950.0	1817.0	20	1895	32	27	M24	58.90
1900	1912.0	2050.0	1917.0	20	1995	32	27	M24	62.18
2000	2012.0	2150.0	2017.0	20	2095	36	27	M24	65.10
2100	2116.0	2250.0	2121.0	24	2195	36	27	M24	79.55
2200	2216.0	2350.0	2221.0	24	2295	40	27	M24	82.94
2300	2316.0	2450.0	2321.0	24	2395	40	27	M24	86.75
2400	2416.0	2550.0	2421.0	24	2495	40	27	M24	89.71
2500	2516.0	2650.0	2521.0	24	2595	48	27	M24	93.52
2600	2616.0	2750.0	2621.0	24	2695	48	27	M24	97.34

2Kg/cm²

KSB 1511-1982.JIS B 2220-1977

SLIP-ON FLANGES



Unit: mm

Nominal Bore of Flange	Outside Diam, of Applicable Pipe	Inside Diam, of Flange d ₀	Sectional Dimensions		Bolt Hole			Nominal Bolt Size
			t	D	C	h	N	
450A	457.2	460	22	605	555	23	16	M20
500A	508	511	22	655	605	23	20	M20
550A	558.8	562	24	720	665	25	20	M22
600A	609.6	613	24	770	715	25	20	M22
650A	660.4	664	24	825	770	25	24	M22
700A	711.2	715	24	875	820	25	24	M22
750A	762	766	24	945	880	27	24	M24
800A	812.8	817	24	995	930	27	24	M24
(850)A	862.6	868	24	1045	980	27	24	M24
900A	914.4	919	24	1095	1030	27	24	M24
1000A	1016	1021	26	1195	1130	27	28	M24
(1100)A	1117.6	1123	26	1305	1240	27	28	M24
1200A	1219.2	1224	26	1420	1350	27	32	M24
1350A	1371.6	1377	26	1575	1505	27	32	M24
1500A	1524	1529	26	1730	1660	27	36	M24