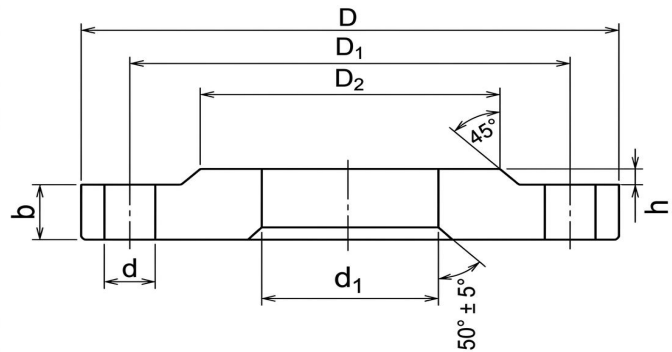


GOST 12820-80 PN6

STEEL PLAIN WELDED FLANGES

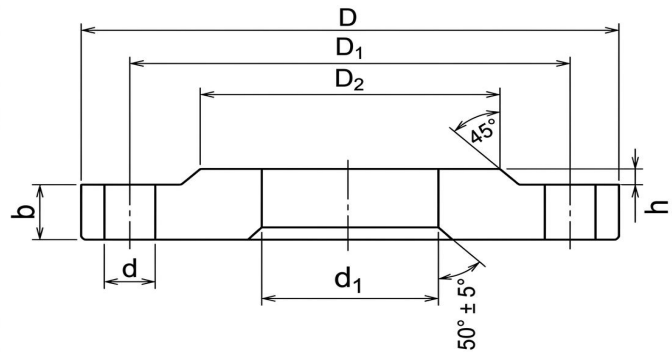


Unit: mm

Nomenclature	Dimensions,mm								Weight,kg
	D	D1	D2	d1	b	h	n	d	
$P_{nom}=0.6\text{Mpa}(6\text{kgf/cm}^2)$									
1-10-6	75	50	35	15	10	2	4	11	0.31
1-15-6	80	55	40	19	10	2	4	11	0.33
1-20-6	90	65	50	26	12	2	4	11	0.53
1-25-6	100	75	60	33	12	2	4	11	0.64
1-32-6	120	90	70	39	13	2	4	14	1.01
1-40-6	130	100	80	46	13	3	4	14	1.21
1-50-6	140	110	90	59	13	3	4	14	1.33
1-65-6	160	130	110	78	13	3	4	14	1.63
1-80-6	185	150	128	91	15	3	4	18	2.44
1-100-6	205	170	148	110	15	3	4	18	2.85
1-125-6	235	200	178	135	17	3	8	18	3.88
1-150-6	260	225	202	161	17	3	8	18	4.39
1-175-6	290	255	232	196	19	3	8	18	5.36
1-200-6	315	280	258	222	19	3	8	18	5.89
1-225-6	340	305	282	245	19	3	8	18	6.60
1-250-6	370	335	312	273	20	3	12	18	7.67
1-300-6	435	395	365	325	20	4	12	22	10.28
1-350-6	485	445	415	377	22	4	12	22	12.58
1-400-6	535	495	465	426	24	4	16	22	15.20
1-450-6	590	550	520	480	24	4	16	22	17.25
1-500-6	640	600	570	530	25	4	16	22	19.72
1-600-6	755	705	670	630	25	5	20	26	26.24
1-700-6	860	810	775	720	27	5	24	26	36.68
1-800-6	975	920	880	820	27	5	24	30	46.14
1-900-6	1075	1020	980	920	29	5	24	30	55.10
1-1000-6	1175	1120	1080	1020	31	5	28	30	64.36
1-1200-6	1400	1340	1295	1220	34	5	32	33	99.03

GOST 12820-80 PN10

STEEL PLAIN WELDED FLANGES

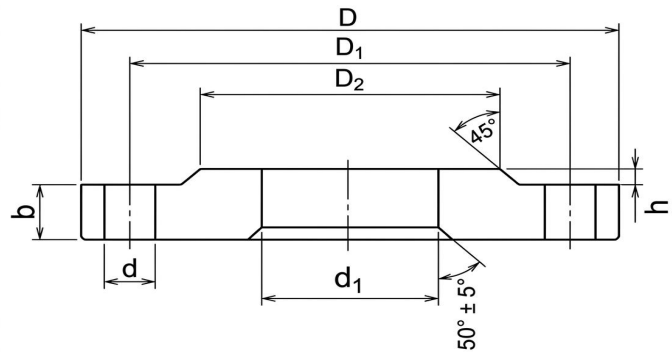


Unit: mm

Nomenclature	Dimensions,mm								Weight,kg
	D	D1	D2	d1	b	h	n	d	
P_{nom}=1.0Mpa(10kgf/cm²)									
1-10-10	90	60	42	15	10	2	4	14	0.46
1-15-10	95	65	47	19	10	2	4	14	0.51
1-20-10	105	75	58	26	12	2	4	14	0.74
1-25-10	115	85	68	33	12	2	4	14	0.89
1-32-10	135	100	78	39	14	2	4	18	1.40
1-40-10	145	110	88	46	15	3	4	18	1.71
1-50-10	160	125	102	59	15	3	4	18	2.06
1-65-10	180	145	122	78	17	3	4	18	2.80
1-80-10	195	160	133	91	17	3	4	18	3.19
1-100-10	215	180	158	110	19	3	8	18	3.96
1-125-10	245	210	184	135	21	3	8	18	5.40
1-150-10	280	240	212	161	21	3	8	22	6.62
1-175-10	310	270	242	196	21	3	8	22	7.32
1-200-10	335	295	268	222	21	3	8	22	8.05
1-225-10	365	325	295	245	21	3	8	22	9.30
1-250-10	390	350	320	273	23	3	12	22	10.65
1-300-10	440	400	370	325	24	4	12	22	12.90
1-350-10	500	460	430	377	24	4	16	22	15.85
1-400-10	565	515	482	426	26	4	16	26	21.56
1-450-10	615	565	532	480	26	4	20	26	22.76
1-500-10	670	620	585	530	28	4	20	26	27.70
1-600-10	780	725	685	630	31	5	20	30	39.40
1-700-10	895	840	800	720	34	5	24	30	59.46
1-800-10	1010	950	905	820	37	5	24	33	79.16
1-900-10	1110	1050	1005	920	40	5	28	33	94.13
1-1000-10	1220	1160	1110	1020	43	5	28	33	118.43
1-1200-10	1455	1380	1330	1222	51	5	32	39	197.44

GOST 12820-80 PN16

STEEL PLAIN WELDED FLANGES

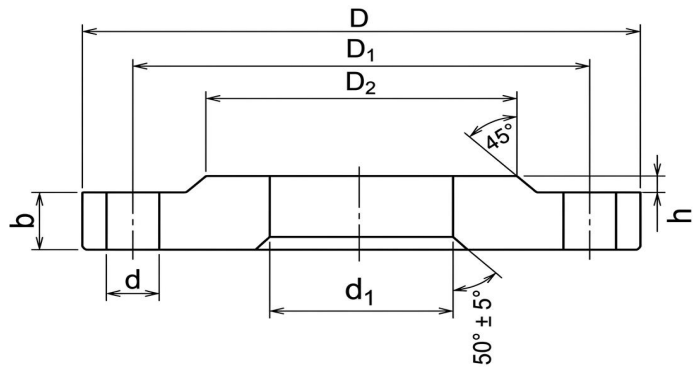


Unit: mm

Nomenclature	Dimensions,mm								Weight,kg
	D	D1	D2	d1	b	h	n	d	
P_{nom}=1.6Mpa(16kgf/cm²)									
1-10-16	90	60	42	15	12	2	4	14	0.54
1-15-16	95	65	47	19	12	2	4	14	0.61
1-20-16	105	75	58	26	14	2	4	14	0.86
1-25-16	115	85	68	33	16	2	4	14	1.17
1-32-16	135	100	78	39	16	2	4	18	1.58
1-40-16	145	110	88	46	17	3	4	18	1.96
1-50-16	160	125	102	59	19	3	4	18	2.56
1-65-16	180	145	122	78	21	3	4	18	3.42
1-80-16	195	160	133	91	21	3	4	18	3.71
1-100-16	215	180	158	110	23	3	8	18	4.73
1-125-16	245	210	184	135	25	3	8	18	6.38
1-150-16	280	240	212	161	25	3	8	22	7.81
1-175-16	310	270	242	196	25	3	8	22	8.64
1-200-16	335	295	268	222	27	3	12	22	10.10
1-225-16	365	325	295	245	27	3	12	22	11.70
1-250-16	405	355	320	273	28	3	12	26	14.49
1-300-16	460	410	370	325	28	4	12	26	17.78
1-350-16	520	470	430	377	30	4	16	26	22.88
1-400-16	580	525	482	426	34	4	16	30	31.00
1-450-16	640	585	532	480	38	4	20	30	39.64
1-500-16	710	650	585	530	44	4	20	33	57.01
1-600-16	840	770	685	630	45	5	20	39	80.03
1-700-16	910	840	800	720	47	5	24	39	84.21
1-800-16	1020	950	905	820	49	5	24	39	104.41
1-900-16	1120	1050	1005	920	54	5	28	39	128.60
1-1000-16	1255	1170	1110	1020	58	5	28	45	179.37
1-1200-16	1485	1390	1330	1220	71	5	32	52	297.78

GOST 12820-80 PN25

STEEL PLAIN WELDED FLANGES



Unit: mm

Nomenclature	Dimensions,mm								Weight,kg
	D	D ₁	D ₂	d ₁	b	h	n	d	
P_{nom}=2.5Mpa(25kgf/cm²)									
1-10-6	90	60	42	15	14	2	4	14	0.63
1-15-25	95	65	47	19	14	2	4	14	0.7
1-20-25	105	75	58	26	16	2	4	14	0.98
1-25-25	115	85	68	33	16	2	4	14	1.17
1-32-25	135	100	78	39	18	2	4	18	1.77
1-40-25	145	110	88	46	19	3	4	18	2.18
1-50-25	160	125	102	59	21	3	4	18	2.71
1-65-25	180	145	122	78	21	3	8	18	3.22
1-80-25	195	160	133	91	23	3	8	18	4.06
1-100-25	230	190	158	110	25	3	8	22	5.92
1-125-25	270	220	184	135	27	3	8	26	8.26
1-150-25	300	250	212	161	27	3	8	26	10.12
1-200-25	360	310	278	222	29	3	12	26	13.34
1-250-25	425	370	335	273	31	3	12	30	18.9
1-300-25	485	430	390	325	32	4	16	30	23.95
1-350-25	550	490	450	377	38	4	16	33	34.35
1-400-25	610	550	505	426	40	4	16	33	44.62
1-500-25	730	660	615	530	48	4	20	39	67.3
1-600-25	840	770	720	630	49	5	20	39	90.87
1-800-25	1075	990	930	820	63	5	24	45	181.43