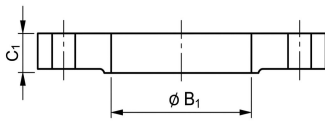
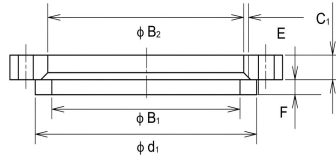
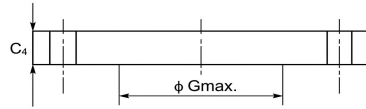
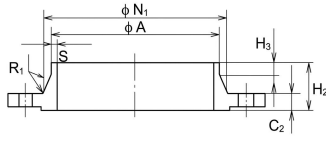
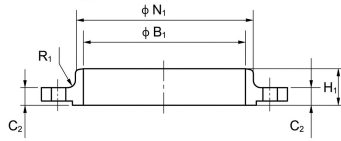
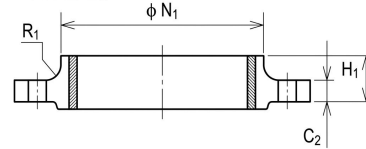
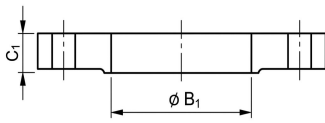
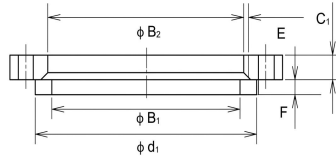
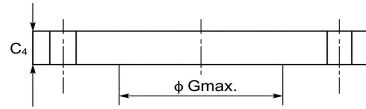


**TYPE 01**

**TYPE 02**

**TYPE 05**

**EN 1092-1:2007**
**DIMENSIONS OF PN6 FLANGE**

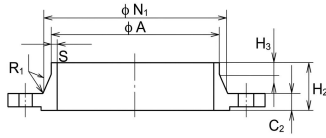
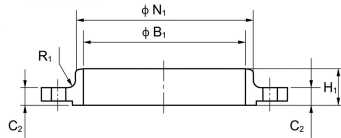
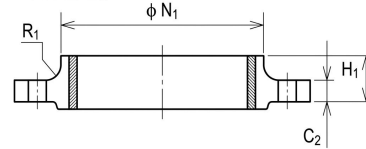
DN	Outside diameter	Diameter of bolt circle	Diameter of bolt hole	Bolt number	Outside diameter of neck A	Bore diameters		Flange thickness			Chamfer	Wall thickness	Collar Thickness	Diameter of shoulder Gmax
						B1	B2	C1	C2	C4	E	S	F	
						Flange type								
	01,02,05,11,12,13				11	01 12	02	01 02	11 12,13	05	02	11	32	05
10	75	50	11	4	17.2	18	21	12	12	12	3	2	10	-
15	80	55	11	4	21.3	22	25	12	12	12	3	2	10	-
20	90	65	11	4	26.9	27.5	31	14	14	14	4	2.3	10	-
25	100	75	11	4	33.7	34.5	38	14	14	14	4	2.6	10	-
32	120	90	14	4	42.4	43.5	46	16	14	14	5	2.6	10	-
40	130	100	14	4	48.3	49.5	53	16	14	14	5	2.6	10	-
50	140	110	14	4	60.3	61.5	65	16	14	14	5	2.9	12	-
65	160	130	14	4	76.1	77.5	81	16	14	14	6	2.9	12	55
80	190	150	18	4	88.9	90.5	94	18	16	16	6	3.2	12	70
100	210	170	18	4	114.3	116	120	18	16	16	6	3.6	14	90
125	240	200	18	8	139.7	141.5	145	20	18	18	6	4	14	115
150	265	225	18	8	168.3	170.5	174	20	18	18	6	4.5	14	140
200	320	280	18	8	219.1	221.5	226	22	20	20	6	6.3	16	190
250	375	335	18	12	273	276.5	281	24	22	22	8	6.3	18	235
300	440	395	22	12	323.9	327.5	333	24	22	22	8	7.1	18	285
350	490	445	22	12	355.6	359.5	365	26	22	22	8	7.1	18	330
400	540	495	22	16	406.4	411	416	28	22	22	8	7.1	20	380
450	595	550	22	16	457	462	467	30	22	24	8	7.1	20	425
500	645	600	22	20	508	513.5	519	30	24	24	8	7.1	22	475
600	755	705	26	20	610	616.5	622	32	30	30	8	7.1	22	575
700	860	810	26	24	711	To be specified by the purchaser	721	40	30	40	8	8	-	670
800	975	920	30	24	813		824	44	30	44	4	8	-	770
900	1075	1020	30	24	914		926	48	34	48	4	8	-	860
1000	1175	1120	30	28	1016		1028	52	38	52	4	8	-	960
1200	1405	1340	33	32	1219		1234	60	42	60	5	8.8	-	1160

**TYPE 11**

**TYPE 12**

**TYPE 13**

**EN 1092-1:2007**
**DIMENSIONS OF PN6 FLANGE**

DN	Raised face		Length			Neck diameters		Corner radii	APPROXIMATE WEIGHT				
	d1	f1	H1	H2	H3	N1	N2	R1					
	Flange type												
	01,05,11,12,13		12 13	11	11	11	12 13	11 12,13	Type01	Type02	Type05	Type11	Type12
10	35	2	20	28	6	26	25	4	0.356	0.345	0.38	0.353	0.326
15	40	2	20	30	6	30	30	4	0.402	0.388	0.438	0.408	0.373
20	50	2	24	32	6	38	40	4	0.592	0.568	0.657	0.621	0.584
25	60	2	24	35	6	42	50	4	0.719	0.688	0.821	0.762	0.729
32	70	2	26	35	6	55	60	6	1.16	1.12	1.18	1.11	1.04
40	80	3	26	38	7	62	70	6	1.35	1.29	1.39	1.26	1.2
50	90	3	28	38	8	74	80	6	1.48	1.42	1.62	1.43	1.34
65	110	3	32	38	9	88	100	6	1.86	1.76	2.14	1.77	1.83
80	128	3	34	42	10	102	110	8	2.95	2.84	3.43	2.88	2.75
100	148	3	40	45	10	130	130	8	3.26	3.1	4.22	3.41	3.01
125	178	3	44	48	10	155	160	8	4.31	4.12	6.1	4.65	4.3
150	202	3	44	48	12	184	185	10	4.76	4.53	7.51	5.5	4.63
200	258	3	44	55	15	236	240	10	6.88	6.51	12.3	8.6	6.97
250	312	3	44	60	15	290	295	12	8.92	8.32	18.5	11.7	9.13
300	365	4	44	62	15	342	355	12	11.9	11.1	25.5	15.3	12.4
350	415	4	-	62	15	385	-	12	16.8	15.9	31.8	20.3	-
400	465	4	-	65	15	438	-	12	19.8	18.8	38.5	23.1	-
450	520	4	-	65	15	492	-	12	24.6	23.3	51.2	27	-
500	570	4	-	68	15	538	-	12	26.4	24.9	60.1	30.8	-
600	670	5	-	70	16	640	-	12	34.8	33	103	44	-
700	775	5	-	76	16	740	-	12	-	-	178	53.7	-
800	880	5	-	76	16	842	-	12	-	-	252	64.4	-
900	980	5	-	78	16	942	-	12	-	-	336	79.2	-
1000	1080	5	-	82	16	1045	-	16	-	-	435	98.6	-
1200	1295	5	-	104	20	1248	-	16	-	-	717	152	-

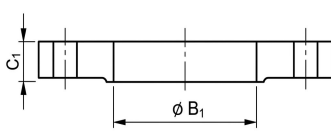
**TYPE 01**

**TYPE 02**

**TYPE 05**

**EN 1092-1:2007**
**DIMENSIONS OF PN10 FLANGE**

DN	Outside diameter	Diameter of bolt circle	Diameter of bolt hole	Bolt number	Outside diameter of neck A	Bore diameters		Flange thickness			Chamfer	Wall thickness	Collar Thickness	Diameter of shoulder Gmax
						B1	B2	C1	C2	C4	E	S	F	
						Flange type								
01,02,05,11,12,13					11	01 12	02	01 02	11 12,13	05	02	11	32	05
10	90	60	14	4	17.2	18	21	14	16	16	3	2	12	-
15	95	65	14	4	21.3	22	25	14	16	16	3	2	12	-
20	105	75	14	4	26.9	27.5	31	16	18	18	4	2.3	14	-
25	115	85	14	4	33.7	34.5	38	16	18	18	4	2.6	14	-
32	140	100	18	4	42.4	43.5	47	18	18	18	5	2.6	14	-
40	150	110	18	4	48.3	49.5	53	18	18	18	5	2.6	14	-
50	165	125	18	4	60.3	61.5	65	20	18	18	5	2.9	16	-
65	185	145	18	8	76.1	77.5	81	20	18	18	6	2.9	16	55
80	200	160	18	8	88.9	90.5	94	20	20	20	6	3.2	16	70
100	220	180	18	8	114.3	116	120	22	20	20	6	3.6	18	90
125	250	210	18	8	139.7	141.5	145	22	22	22	6	4	18	115
150	285	240	22	8	168.3	170.5	174	24	22	22	6	4.5	20	140
200	340	295	22	8	219.1	221.5	226	24	24	24	6	6.3	20	190
250	395	350	22	12	273	276.5	281	26	26	26	8	6.3	22	235
300	445	400	22	12	323.9	327.5	333	26	26	26	8	7.1	22	285
350	505	460	22	16	355.6	359.5	365	30	26	26	8	7.1	22	330
400	565	515	26	16	406.4	411	416	32	26	26	8	7.1	24	380
450	615	565	26	20	457	462	467	36	28	28	8	7.1	24	425
500	670	620	26	20	508	513.5	519	38	28	28	8	7.1	26	475
600	780	725	30	20	610	616.5	622	42	30	34	8	8	26	575
700	895	840	30	24	711	To be specified by the purchaser	721	50	35	38	8	8.8		670
800	1015	950	33	24	813		824	56	38	48	8	8.8		770
900	1115	1050	33	28	914		926	62	38	50	8	12.5		860
1000	1230	1160	36	28	1016		1028	70	44	54	8	12.5		960
1200	1455	1380	39	32	1219		1234	83	55	66	8	12.5		1160

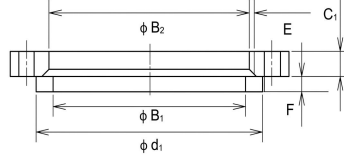
**TYPE 11**

**TYPE 12**

**TYPE 13**

**EN 1092-1:2007**
**DIMENSIONS OF PN10 FLANGE**

DN	Raised face		Length			Neck diameters		Corner radii	APPROXIMATE WEIGHT				
	d1	f1	H1	H2	H3	N1	N2	R1					
	Flange type												
	01,05,11,12,13		12 13	11	11	11	12 13	11 12,13	Type01	Type02	Type05	Type11	Type12
10	40	2	22	35	6	28	30	4	0.604	0.591	0.722	0.678	0.646
15	45	2	22	38	6	32	35	4	0.67	0.654	0.813	0.768	0.722
20	58	2	26	40	6	40	45	4	0.936	0.909	1.14	1.09	1.04
25	68	2	28	40	6	46	52	4	1.11	1.08	1.38	1.3	1.25
32	78	2	30	42	6	56	60	6	1.82	1.77	2.03	1.91	1.81
40	88	3	32	45	7	64	70	6	2.08	2.02	2.35	2.15	2.06
50	102	3	28	45	8	74	84	6	2.73	2.52	2.88	2.53	2.39
65	122	3	32	45	10	92	104	6	3.16	3.05	3.51	3.03	2.97
80	138	3	34	50	10	105	118	6	3.79	3.48	4.61	3.92	3.78
100	158	3	40	52	12	131	140	8	4.39	4.2	5.65	4.62	4.38
125	188	3	44	55	12	156	168	8	5.41	5.21	8.13	6.3	6.07
150	212	3	44	55	12	184	195	10	7.14	6.89	10.5	7.81	7.24
200	268	3	44	62	16	234	246	10	9.27	8.87	16.5	11.6	10.1
250	320	3	46	68	16	292	298	12	11.8	11.2	24.1	15.8	12.8
300	370	4	46	68	16	342	350	12	13.6	12.8	30.8	18.3	14.5
350	430	4	53	68	16	385	400	12	20.4	19.4	39.6	25.3	22.7
400	482	4	57	72	16	440	456	12	27.5	26.4	49.4	30.6	28
450	532	4	63	72	16	488	502	12	33.6	32.2	63	35.1	32.3
500	585	4	67	75	16	542	559	12	40.2	38.5	75.2	40.5	38.7
600	685	5	75	82	18	642	658	12	54.5	52.2	124	52.9	48.9
700	800	5	-	85	18	746	-	12	-	79.4	183	75.8	-
800	905	5	-	96	18	850	-	12	-	112	297	102	-
900	1005	5	-	99	20	950	-	12	-	135	374	121	-
1000	1110	5	-	105	20	1052	-	16	-	180	492	161	-
1200	1330	5	-	132	25	1256	-	16	-	278	842	258	-

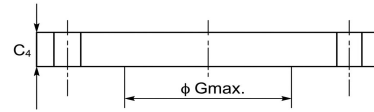
TYPE 01



TYPE 02



TYPE 05

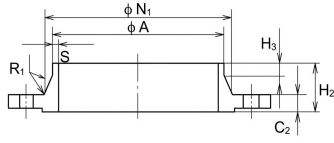


EN 1092-1:2007

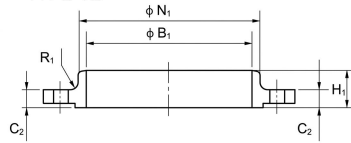
DIMENSIONS OF PN16 FLANGE

DN	Outside diameter	Diameter of bolt circle	Diameter of bolt hole	Bolt number	Outside diameter of neck A	Bore diameters		Flange thickness			Chamfer E	Wall thickness S	Collar Thickness F	Diameter of shoulder Gmax
						B1	B2	C1	C2	C4				
						Flange type								
01,02,05,11,12,13					11	01 12	02	01 02	11 12,13	05	02	11	32	05
10	90	60	14	4	17.2	18.0	21	14	16	16	3	2	12	-
15	95	65	14	4	21.3	22.0	25	14	16	16	3	2	12	-
20	105	75	14	4	26.9	27.5	31	16	18	18	4	2.3	14	-
25	115	85	14	4	33.7	34.5	38	16	18	18	4	2.6	14	-
32	140	100	18	4	42.4	43.5	47	18	18	18	5	2.6	14	-
40	150	110	18	4	48.3	49.5	53	18	18	18	5	2.6	14	-
50	165	125	18	4	60.3	61.5	65	20	18	18	5	2.9	16	-
65	185	145	18	8	76.1	77.5	81	20	18	18	6	2.9	16	55
80	200	160	18	8	88.9	90.5	94	20	20	20	6	3.2	16	70
100	220	180	18	8	114.3	116.0	120	22	20	20	6	3.6	18	90
125	250	210	18	8	139.7	141.5	145	22	22	22	6	4	18	115
150	285	240	22	8	168.3	170.5	174	24	22	22	6	4.5	20	140
200	340	295	22	12	219.1	221.5	226	26	24	24	6	6.3	20	190
250	405	355	26	12	273.0	276.5	281	29	26	26	8	6.3	22	235
300	460	410	26	12	323.9	327.5	333	32	28	28	8	7.1	24	285
350	520	470	26	16	355.6	359.5	365	35	30	30	8	8	26	330
400	580	525	30	16	406.4	411.0	416	38	32	32	8	8	28	380
450	640	585	30	20	457.0	462.0	467	42	34	40	8	8.8	30	425
500	715	650	33	20	508.0	513.5	519	46	36	44	8	8.8	32	475
600	840	770	36	20	610.0	616.5	622	55	40	54	8	10	32	575
700	910	840	36	24	711.0	To be specified by the purchaser	721	63	40	58	8	10	-	670
800	1025	950	39	24	813.0		824	74	41	62	8	12.5	-	770
900	1125	1050	39	28	914.0		926	82	48	64	8	12.5	-	860
1000	1255	1170	42	28	1016.0		1030	90	59	68	8	12.5	-	960

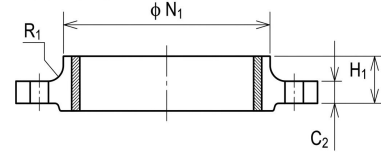
TYPE 11



TYPE 12



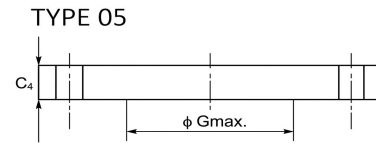
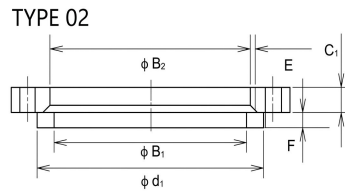
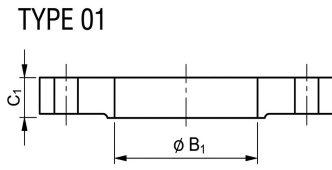
TYPE 13



## EN 1092-1:2007

### DIMENSIONS OF PN16 FLANGE

DN	Raised face		Length			Neck diameters		Corner radii	APPROXIMATE WEIGHT				
	d <sub>1</sub>	f <sub>1</sub>	H <sub>1</sub>	H <sub>2</sub>	H <sub>3</sub>	N <sub>1</sub>	N <sub>2</sub>	R <sub>1</sub>					
	Flange type												
	01,05,11,12,13		12 13	11	11	11	12 13	11 12,13	Type01	Type02	Type05	Type11	Type12
10	40	2	22	35	6	28	30	4	0.604	0.591	0.722	0.678	0.646
15	45	2	22	38	6	32	35	4	0.67	0.654	0.813	0.768	0.722
20	58	2	26	40	6	40	45	4	0.936	0.909	1.14	1.09	1.04
25	68	2	28	40	6	46	52	4	1.11	1.08	1.38	1.3	1.25
32	78	2	30	42	6	56	60	6	1.82	1.77	2.03	1.91	1.81
40	88	3	32	45	7	64	70	6	2.08	2.02	2.35	2.15	2.06
50	102	3	28	45	8	74	84	6	2.73	2.52	2.88	2.53	2.39
65	122	3	32	45	10	92	104	6	3.16	3.05	3.51	3.03	2.97
80	138	3	34	50	10	105	118	6	3.79	3.48	4.61	3.92	3.78
100	158	3	40	52	12	131	140	8	4.39	4.2	5.65	4.62	4.38
125	188	3	44	55	12	156	168	8	5.41	5.21	8.13	6.3	6.07
150	212	3	44	55	12	184	195	10	7.14	6.89	10.5	7.81	7.24
200	268	3	44	62	16	235	246	10	9.73	9.31	16.2	11.5	9.8
250	320	3	46	70	16	292	298	12	14.2	13.5	25	16.7	13.6
300	378	4	46	78	16	344	350	12	19	18	35.1	22.1	17.2
350	438	4	57	82	16	390	400	12	28.2	27	48	32.8	27.9
400	490	4	63	85	16	445	456	12	35.9	34.6	63.5	41.1	35.7
450	550	4	68	83	16	490	502	12	46.1	44.6	96.6	50.6	45
500	610	4	73	84	16	548	559	12	64	62	133	66.2	60.4
600	725	5	83	88	18	670	658	12	102	98.8	226	104	94
700	795	5	83	104	18	755	760	12	-	107	285	96.5	-
800	900	5	90	108	20	855	864	12	-	152	388	122	-
900	1000	5	94	118	20	955	968	12	-	184	483	155	-
1000	1115	5	100	137	22	1058	1072	16	-	257	640	233	-

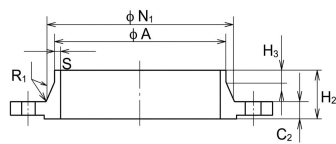


## EN 1092-1:2007

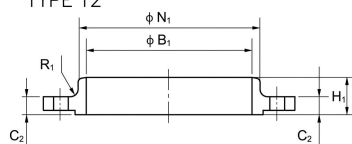
### DIMENSIONS OF PN25 FLANGE

DN	Outside diameter	Diameter of bolt circle	Diameter of bolt hole	Bolt number	Outside diameter of neck A	Bore diameters		Flange thickness			Chamfer	Wall thickness	Collar Thickness	Diameter of shoulder
						B1	B2	C1	C2	C4	E	S	F	Gmax
						Flange type								
	01,02,05,11,12,13				11	01 12	02	01 02	11 12,13	05	02	11	32	05
10	90	60	14	4	17.2	18	21	14	16	16	3	2	12	-
15	95	65	14	4	21.3	22	25	14	16	16	3	2	12	-
20	105	75	14	4	26.9	27.5	31	16	18	18	4	2.3	14	-
25	115	85	14	4	33.7	34.5	38	16	18	18	4	2.6	14	-
32	140	100	18	4	42.4	43.5	47	18	18	18	5	2.6	14	-
40	150	110	18	4	48.3	49.5	53	18	18	18	5	2.6	14	-
50	165	125	18	4	60.3	61.5	65	20	20	20	5	2.9	16	-
65	185	145	18	8	76.1	77.5	81	22	22	22	6	2.9	16	55
80	200	160	18	8	88.9	90.5	94	24	24	24	6	3.2	18	70
100	235	190	22	8	114.3	116	120	26	24	24	6	3.6	20	90
125	270	220	26	8	139.7	141.5	145	28	26	26	6	4	22	115
150	300	250	26	8	168.3	170.5	174	30	28	28	6	4.5	24	140
200	360	310	26	12	219.1	221.5	226	32	30	30	6	6.3	26	190
250	425	370	30	12	273	276.5	281	35	32	32	8	7.1	26	235
300	485	430	30	16	323.9	327.5	333	38	34	34	8	8	28	285
350	555	490	33	16	355.6	359.5	365	42	38	38	8	8	32	332
400	620	550	36	16	406.4	411	416	48	40	40	8	8.8	34	380
450	670	600	36	20	457	462	467	54	46	50	8	8.8	36	425
500	730	660	36	20	508	513.5	519	58	48	51	8	10	38	475
600	845	770	39	20	610	616.5	622	68	48	66	8	12.5	40	575

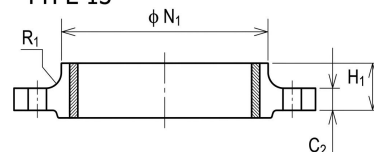
TYPE 11



TYPE 12



TYPE 13

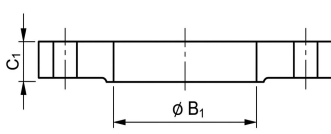


## EN 1092-1:2007

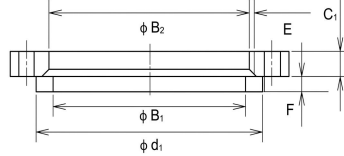
### DIMENSIONS OF PN25 FLANGE

DN	Raised face		Length			Neck diameters		Corner radii	APPROXIMATE WEIGHT				
	d <sub>1</sub>	f <sub>1</sub>	H <sub>1</sub>	H <sub>2</sub>	H <sub>3</sub>	N <sub>1</sub>	N <sub>2</sub>	R <sub>1</sub>					
	Flange type												
	01,05,11,12,13		12 13	11	11	11	12 13	11 12,13	Type01	Type02	Type05	Type11	Type12
10	40	2	22	35	6	28	30	4	0.604	0.591	0.722	0.678	0.646
15	45	2	22	38	6	32	35	4	0.67	0.654	0.813	0.768	0.722
20	58	2	26	40	6	40	45	4	0.936	0.909	1.14	1.09	1.04
25	68	2	28	40	6	46	52	4	1.11	1.08	1.38	1.3	1.25
32	78	2	30	42	6	56	60	6	1.82	1.77	2.03	1.91	1.81
40	88	3	32	45	7	64	70	6	2.08	2.02	2.35	2.15	2.06
50	102	3	34	48	8	75	84	6	2.73	2.65	3.2	2.85	2.74
65	122	3	38	52	10	90	104	6	3.48	3.36	4.29	3.68	3.65
80	138	3	40	58	12	105	118	8	4.32	4.18	5.54	4.78	4.59
100	162	3	44	65	12	134	145	8	6.07	5.87	7.6	6.46	6.1
125	188	3	48	68	12	162	170	8	8.19	7.95	10.8	8.86	8.22
150	218	3	52	75	12	192	200	10	10.3	9.97	14.6	11.7	10.6
200	278	3	52	80	16	244	256	10	14.3	13.8	22.5	17.1	14.9
250	335	3	60	88	18	298	310	12	20.1	19.4	33.5	24.3	20.9
300	395	4	67	92	18	352	364	12	26.6	25.5	46.3	31.8	27.3
350	450	4	72	100	20	398	418	12	41.8	40.5	68.1	48.8	45.1
400	505	4	78	110	20	452	472	12	57.6	56.1	89.7	63.3	57.7
450	555	4	84	110	20	500	520	12	69.8	67.8	130	76	69.6
500	615	4	90	125	20	558	580	12	87	84.6	159	97	87
600	720	5	100	125	20	660	684	12	127	124	278	121	111

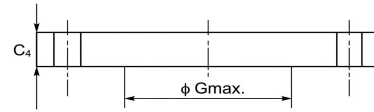
TYPE 01



TYPE 02



TYPE 05

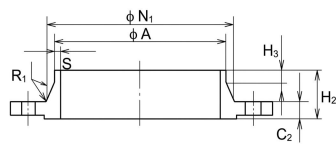


## EN 1092-1:2007

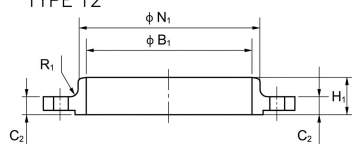
### DIMENSIONS OF PN40 FLANGE

DN	Outside diameter	Diameter of bolt circle	Diameter of bolt hole	Bolt number	Outside diameter of neck A	Bore diameters		Flange thickness			Chamfer	Wall thickness	Collar Thickness	Diameter of shoulder
						B1	B2	C1	C2	C4	E	S	F	Gmax
						Flange type								
	01,02,05,11,12,13				11	01 12	02	01 02	11 12,13	05	02	11	32	05
10	90	60	14	4	17.2	18.0	21	14	16	16	3	2.0	12	-
15	95	65	14	4	21.3	22.0	25	14	16	16	3	2.0	12	-
20	105	75	14	4	26.9	27.5	31	16	18	18	4	2.3	14	-
25	115	85	14	4	33.7	34.5	38	16	18	18	4	2.6	14	-
32	140	100	18	4	42.4	43.5	47	18	18	18	5	2.6	14	-
40	150	110	18	4	48.3	49.5	53	18	18	18	5	2.6	14	-
50	165	125	18	4	60.3	61.5	65	20	20	20	5	2.9	16	-
65	185	145	18	8	76.1	77.5	81	22	22	22	6	2.9	16	55
80	200	160	18	8	88.9	90.5	94	24	24	24	6	3.2	18	70
100	235	190	22	8	114.3	116.0	120	26	24	24	6	3.6	20	90
125	270	220	26	8	139.7	141.5	145	28	26	26	6	4.0	22	115
150	300	250	26	8	168.3	170.5	174	30	28	28	6	4.5	24	140
200	375	320	30	12	219.1	221.5	226	36	34	36	6	6.3	28	190
250	450	385	33	12	273.0	276.5	281	42	38	38	8	7.1	30	235
300	515	450	33	16	323.9	327.5	333	52	42	42	8	8.0	34	285
350	580	510	36	16	355.6	359.5	365	58	46	46	8	8.8	36	330
400	660	585	39	16	406.4	411.0	416	65	50	50	8	11.0	42	380
450	685	610	39	20	457.0	462.0	467	To be specified by the purchaser	57	57	8	12.5	46	425
500	755	670	42	20	508.0	513.5	519		57	57	8	14.2	50	475
600	890	795	48	20	610.0	616.5	622		72	72	8	16.0	54	575

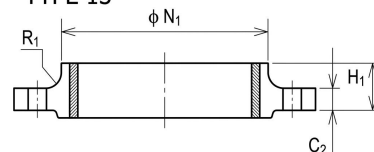
TYPE 11



TYPE 12



TYPE 13



## EN 1092-1:2007

### DIMENSIONS OF PN40 FLANGE

DN	Raised face		Length			Neck diameters		Corner radii	APPROXIMATE WEIGHT				
	d <sub>1</sub>	f <sub>1</sub>	H <sub>1</sub>	H <sub>2</sub>	H <sub>3</sub>	N <sub>1</sub>	N <sub>2</sub>	R <sub>1</sub>					
	Flange type												
	01,05,11,12,13		12 13	11	11	11	12 13	11 12,13	Type01	Type02	Type05	Type11	Type12
10	40	2	22	35	6	28	30	4	0.604	0.591	0.722	0.678	0.646
15	45	2	22	38	6	32	35	4	0.67	0.654	0.813	0.768	0.722
20	58	2	26	40	6	40	45	4	0.936	0.909	1.14	1.09	1.04
25	68	2	28	40	6	46	52	4	1.11	1.08	1.38	1.3	1.25
32	78	2	30	42	6	56	60	6	1.82	1.77	2.03	1.91	1.81
40	88	3	32	45	7	64	70	6	2.08	2.02	2.35	2.15	2.06
50	102	3	34	48	8	75	84	6	2.73	2.65	3.2	2.85	2.74
65	122	3	38	52	10	90	104	6	3.48	3.36	4.29	3.68	3.65
80	138	3	40	58	12	105	118	8	4.32	4.18	5.54	4.78	4.59
100	162	3	44	65	12	134	145	8	6.07	5.87	7.6	6.46	6.1
125	188	3	48	68	12	162	170	8	8.19	7.95	10.8	8.86	8.22
150	218	3	52	75	12	192	200	10	10.3	9.97	14.6	11.7	10.6
200	285	3	52	88	16	244	260	10	17.9	17.4	28.8	21	18.3
250	345	3	60	105	18	306	312	12	29.3	28.4	44.4	34.2	28.3
300	410	4	67	115	18	362	380	12	45.1	43.6	64.2	47.6	40.4
350	465	4	72	125	20	408	424	12	66.7	64.9	89.5	69.3	58.8
400	535	4	78	135	20	462	478	12	97.1	95.1	127	98	82.1
450	560	4	84	135	20	500	522	12	-	-	154	105	86.2
500	615	4	90	140	20	562	576	12	-	-	188	130	105
600	735	5	100	150	20	666	686	12	-	-	331	209	172