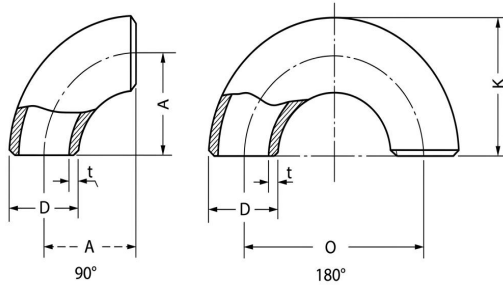
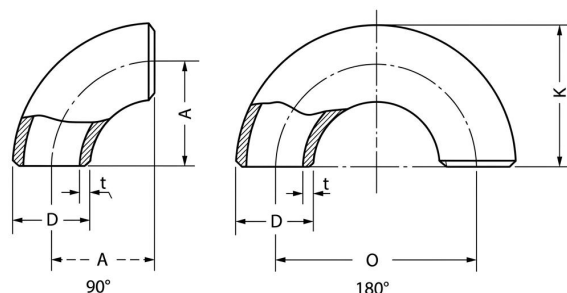


Elbows Short Radius ASME/ANSI B16.28


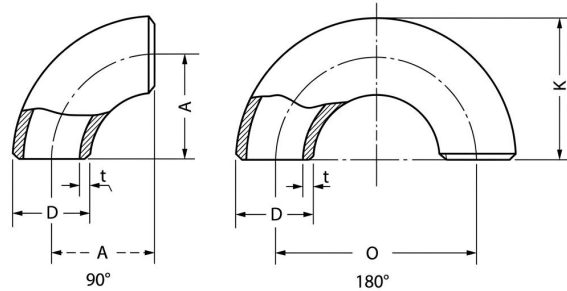
Nominal Pipe Size 公称尺寸 inch	Dimensions 尺寸			Wall Thickness:t 壁厚:t		Approx. Weight理论重量		
	Outside Diameter at Bevel/D坡口处 外径D		Center End: A/B 中心至端面:A/B Center to Center:O 中心至中心:O Back to Fac:K 顶端至端面:Kmm	Sch. No.	t		90°kg	180°kg
	inch	mm	inch		mm			
1	1.315	33.4	A=25.4 O=50.8 K=41.1	Std/40 XS/80 160 XXS	0.133 0.179 0.25 0.358	3.38 4.55 6.35 9.09	0.1 0.13 0.17 0.22	0.2 0.26 0.34 0.44
1 1/4	1.660	42.2	A=31.8 O=63.5 K=52.3	Std/40 XS/80 160 XXS	0.14 0.191 0.25 0.382	3.56 4.85 6.35 9.7	0.17 0.22 0.28 0.39	0.34 0.44 0.56 0.78
1 1/2	1.900	48.3	A=38.1 O=76.2 K=62.0	Std/40 XS/80 160 XXS	0.145 0.2 0.281 0.4	3.68 5.08 7.14 10.15	0.24 0.32 0.43 0.57	0.48 0.64 0.86 1.14
2	3.375	60.3	A=50.8 O=101.6 K=81.0	Std/40 XS/80 160 XXS	0.154 0.218 0.344 0.436	3.91 5.54 8.74 11.07	0.45 0.6 0.89 1.07	0.86 1.2 1.78 2.14
2 1/2	2.875	73	A=63.5 O=127.0 K=100.1	Std/40 XS/80 160 XXS	0.203 0.276 0.375 0.552	5.16 7.01 9.53 14.02	0.86 1.14 1.49 2.03	1.72 2.28 2.98 4.06
3	3.500	88.9	A=76.2 O=152.4 K=120.7	Std/40 XS/80 160 XXS	0.216 0.3 0.438 0.6	5.49 7.62 11.13 15.24	1.35 1.83 2.56 3.31	2.7 3.66 5.12 6.62
4	0.840	21.3	A=101.6 O=203.2 K=158.8	Std/40 XS/80 120 160 XXS	0.237 0.337 0.438 0.531 0.674	6.02 8.56 11.13 13.49 17.12	2.57 3.56 4.52 5.35 6.54	5.14 7.12 9.04 10.7 13.08
5	1.050	26.7	A=127.0 O=254.0 K=196.9	Std/40 XS/80 120 160 XXS	0.258 0.375 0.5 0.625 0.75	6.55 9.53 12.7 15.88 19.05	4.34 6.18 8.04 9.8 11.45	8.68 12.4 16.1 19.6 22.9

Elbows Short Radius ASME/ANSI B16.28

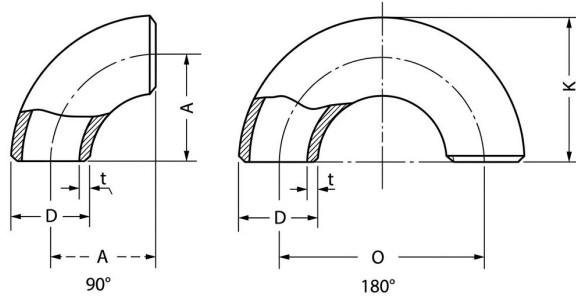


Nominal Pipe Size 公称尺寸 inch	Dimensions 尺寸			Wall Thickness:t 壁厚:t		Approx. Weight理论重量		
	Outside Diameter at Bevel/D坡口处 外径D		Center End: A/B 中心至端面:A/B Center to Center:O 中心至中心:O Back to Fac:K 顶端至端面:Kmm	Sch. No.	t		90°kg	180°kg
	inch	mm	inch		mm			
6	6.625	168.3	A=25.4 O=50.8 K=41.1	Std/40	0.28	7.11	6.77	13.5
				XS/80	0.432	10.97	10.2	20.4
				120	0.562	14.27	13	26
				160	0.719	18.26	16.2	32.4
				XXS	0.864	21.95	19	38
8	8.625	219.1	A=31.8 O=63.5 K=52.3	20	0.25	6.35	10.6	21.2
				30	0.277	7.04	11.8	23.6
				Std/40	0.322	8.18	13.6	27.2
				60	0.406	10.31	16.9	33.8
				XS/80	0.5	12.7	20.9	41.8
				100	0.594	15.09	24.2	48.4
				120	0.719	18.26	28.8	57.6
				140	0.812	20.62	32.2	64.4
				160	0.906	23.01	35.5	71
				XXS	0.875	22.23	34.4	68.8
10	10.750	273	A=38.1 O=76.2 K=62.0	20	0.25	6.35	16.7	33.4
				30	0.307	7.8	20.4	40.8
				Std/40	0.365	9.27	24.1	48.2
				XS/80	0.5	12.7	32.5	65
				80	0.594	15.09	38.2	76.4
				100	0.719	18.26	45.7	91.4
				120	0.844	21.44	53	106
				140/XXS	1	25.4	61.9	124
				160	1.125	28.58	68.7	137
12	12.750	323.9	A=50.8 O=101.6 K=81.0	20	0.25	6.35	23.8	47.6
				30	0.33	8.38	31.2	62.4
				Std	0.375	9.53	35.4	70.8
				40	0.406	10.31	38.2	76.4
				60	0.562	14.27	52.2	104
				XS	0.5	12.7	46.7	93.4
				80	0.688	17.48	63.1	126
				100	0.844	21.44	76.5	153
				120/XXS	1	24.4	89.5	179
				140	1.125	28.58	99.6	199
				160	1.312	33.32	114	228

Elbows Short Radius ASME/ANSI B16.28



Nominal Pipe Size 公称尺寸 inch	Dimensions 尺寸		Wall Thickness:t 壁厚:t			Approx. Weight理论重量		
	Outside Diameter at Bevel/D坡口处 外径D		Center End: A/B 中心至端面:A/B Center to Center:O 中心至中心:O Back to Fac:K 顶端至端面:Kmm			90°kg	180°kg	
	inch	mm	Sch. No.	t				
			inch	mm				
14	14	355.6	A=355.6 O=711.2 K=533.4	10	0.25	6.35	30.6	61.2
				20	0.312	7.92	37.9	75.8
				Std/30	0.375	9.53	45.4	90.8
				40	0.438	11.13	52.8	106
				XS	0.5	12.7	60	120
				60	0.594	15.09	70.6	141
				80	0.75	19.05	88.3	177
				100	0.938	23.83	109	218
				120	1.094	27.79	125	250
				140	1.25	31.75	142	284
160	1.406	35.71	157	314				
16	16	406.4	A=406.4 O=812.8 K=609.6	10	0.25	6.35	40	80
				30	0.312	7.92	49.7	99
				Std/30	0.375	9.53	59.5	119
				XS/40	0.5	12.7	78.7	157
				60	0.656	16.66	102	204
				80	0.844	21.44	130	260
				100	1.031	26.19	157	314
				120	1.219	30.96	183	366
				140	1.438	36.53	213	426
				160	1.594	40.49	233	466
18	18	457	A=457.0 O=914.4 K=685.8	10	0.25	6.35	50.7	101
				20	0.312	7.92	63	126
				Std	0.375	9.53	75.6	151
				30	0.438	11.13	87.9	176
				40	0.562	14.27	112	224
				XS	0.75	19.05	148	296
				60	0.5	12.7	100	200
				80	0.938	23.83	183	366
				100	1.156	29.36	222	444
				120	1.375	34.93	261	522
140	1.562	39.67	293	586				
160	1.781	45.24	330	660				
20	20	508	A=508.0 O=1016.0 K=762.0	10	0.25	6.35	62.7	123
				Std/20	0.375	9.53	93.4	187
				XS/30	0.5	12.7	124	248
				40	0.594	15.09	146	292
				60	0.812	20.62	198	396
				80	1.031	26.19	248	496
				100	1.281	32.54	304	608
				120	1.5	38.1	352	704
				140	1.75	44.45	405	810
				160	1.969	50.01	451	902

Elbows Short Radius ASME/ANSI B16.28


Nominal Pipe Size 公称尺寸 inch	Dimensions 尺寸			Wall Thickness:t 壁厚:t			Approx. Weight理论重量	
	Outside Diameter at Bevel/D坡口处 外径D		Center End: A/B 中心至端面:A/B	Sch. No.	t		90°kg	180°kg
	inch	mm	Center to Center:O 中心至中心:O		inch	mm		
22	22	559	A=558.8 O=1117.6 K=838.3	10	0.25	6.35	75.9	152
				Std/20	0.375	9.53	113	226
				XS/30	0.5	12.7	150	300
				60	0.875	22.23	258	516
				80	1.125	28.58	328	656
				100	1.375	34.93	396	792
				120	1.625	41.28	462	924
				140	1.875	47.63	527	1054
				160	2.125	53.98	590	1180
24	24	610	A=609.6 O=1219.2 K=914.4	10	0.25	6.35	90.5	181
				Std/20	0.375	9.53	135	270
				40	0.562	14.27	201	402
				60	0.688	17.48	244	488
				XS	0.969	24.61	340	680
				80	0.5	12.7	179	358
				100	1.219	30.96	423	846
				120	1.531	38.89	524	1048
				140	1.812	46.02	612	1224
				160	2.062	52.37	689	1378
					2.344	59.54	773	1546